

# AFT Biologist's Report



AFT AGM Nov, 2022

# AFT Activities 2022-23

- West Coast Salmon Smolt Tracking Project (*AST & FMS*)
- Monitoring sea lice burdens of Sea trout (*EMPs & FMS*)
- Adult Salmon Sampling (*ASSES – MSS*)
- Awe Barrage Smolt Tracking Pilot Study (*ADRIA/SSE*)
- River Habitat Improvement Works (*Project funding*)
- Surveys undertaken to inform development projects (*Commercial contracts*)
- Consultation & Representation (*AFT & Argyll DSFB*)

# West Coast Salmon Smolt Tracking Project

- Identify inshore marine migration routes of salmon smolts
- AST, SG, WSSF & FMS Funded
- 2022 – 2nd of 3-year project (April & May)
- 125 Orchy & 75 Etive Smolts >130mm tagged & released
- Receivers deployed at river mouth & throughout west coast





# West coast Salmon Tracking Project

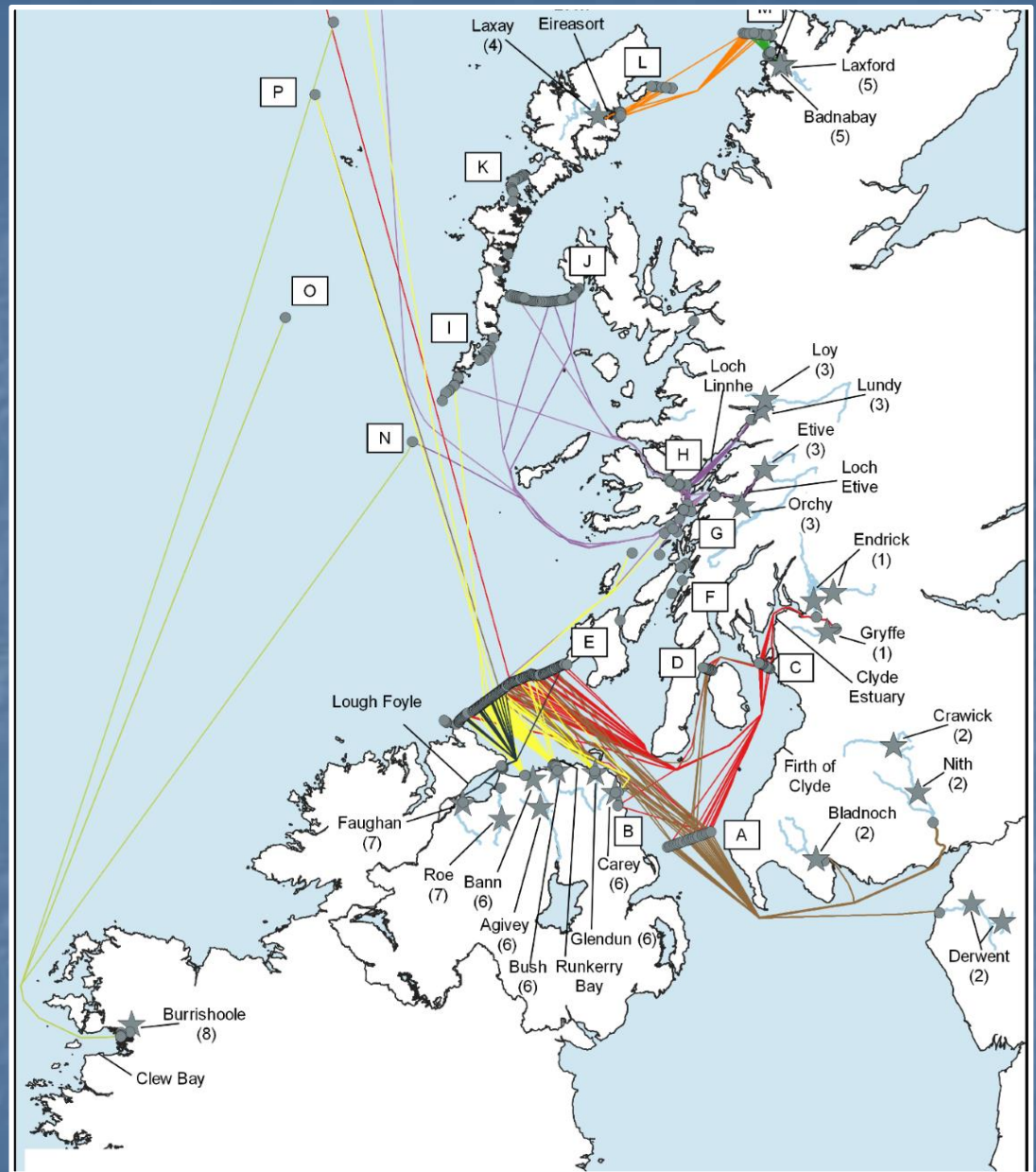
Area Report expected in Mid-December 2022

Changes in Receiver Array

Emphasis on Sound of Mull & Firth of Lorn

Time spent in migration important to new Sea Lice Framework

Passage through Island sounds where tidal energy may be developed

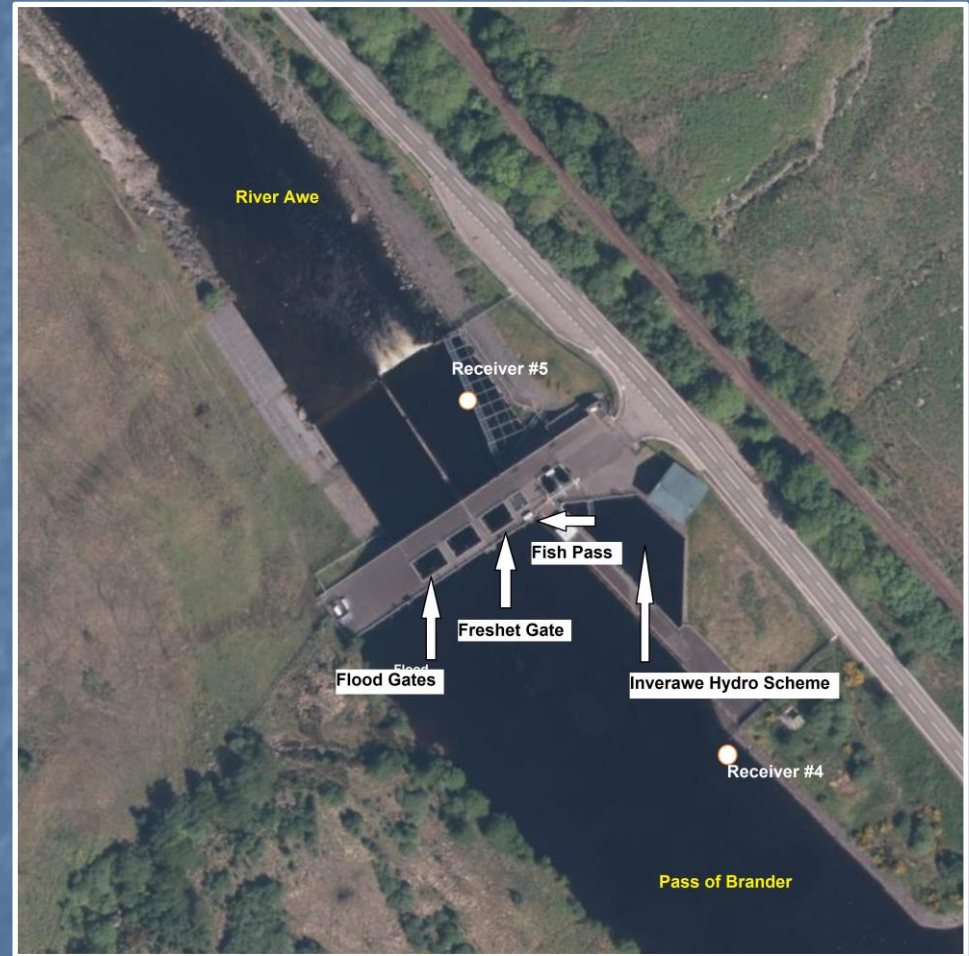


# River Awe downstream fish migration

## - Pilot Acoustic tracking Study

### Identify issues in relation to hydroelectric generation

- 25 smolts detected upstream
- 12 tags were not detected downstream of the Awe barrage
- 9 smolts were last detected at the estuary of the River Awe.
- 8 tags last detected upstream of release point (range 1 to 31 days)
- Phase 2 project under development for 2023





# Habitat Improvement – River Goil



- 5th Year of on-going habitat project
- Reduce bank erosion using green bank revetment
- Increase riparian vegetation by fencing & tree planting
- Benefits to riverbed condition
- £12K+ funding from Lomond & Trossachs National Park 2021-22-23
- Loch Goil Community Trust volunteers
- Tracked digger & dumper to increase productivity & reduce manual work



# Habitat Improvement – River Ruel



Combination of GBR & LWD  
– reducing fine sediment in  
the riverbed

£12+K project in 2022

- Wild Salmonid Support Fund
- River Ruel Improvement Association
- Scottish & Southern Energy
- Cruach Wind Farm Trust





# Habitat Improvement – River Eachaig

- Severely eroded bank due to failure of rock revetment
- £11K - Wild Salmonid Support Fund
- Green bank revetment
- Prevent further erosion and loss of adult fish refuge
- Fencing to regenerate riparian vegetation
- Planting willow & trees





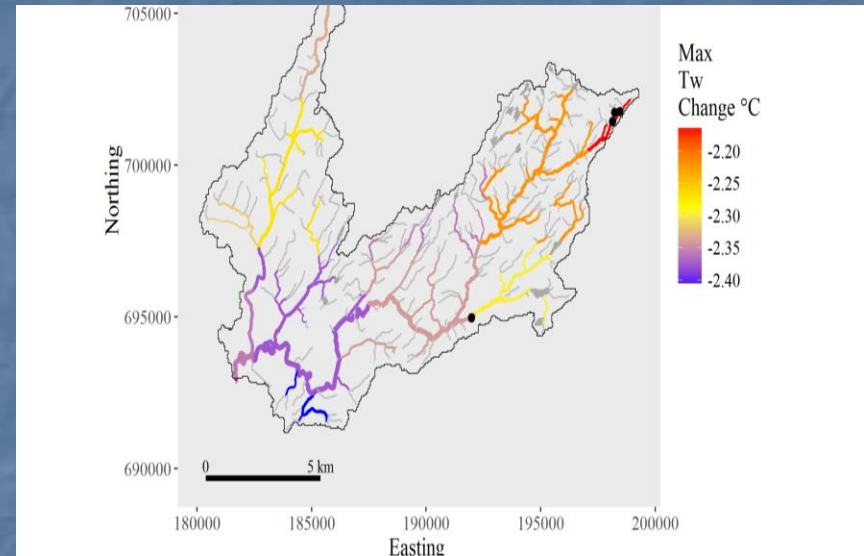
# Habitat Improvement – Dalvuie Burn



- Sea trout spawning burn – North Connel
- £18K WSSF Project
- 700m of burn re-meandered
- New fence on both banks
- Tree planting
- On-going monitoring of substrate condition

# Habitat Improvement – Riverwoods

- **Climate change**
- Warming water in upland streams
- **Lack of riparian woodland = no shading**
- Exacerbated by abstraction & hydro
- **AFT seeking to develop planting projects**





# Fisheries Surveys

- Temperature Monitoring (MSS / ADRIA)
- Adult Salmon Sampling (MSS)
- Juvenile Fish Sampling - Awe, Orchy & Etive, Creran, Loch Fyne Rivers
- Invertebrate sampling introduced at some sites



# Commercial contracts

- Kintarbet sea trout migration (Hydroplan)
- High Constellation Wind Farm Survey (Kintyre)
- FWPM Survey (River Orchy)
- EMP Monitoring





Thank you for your support



[info@argyllfisheriestrust.co.uk](mailto:info@argyllfisheriestrust.co.uk)